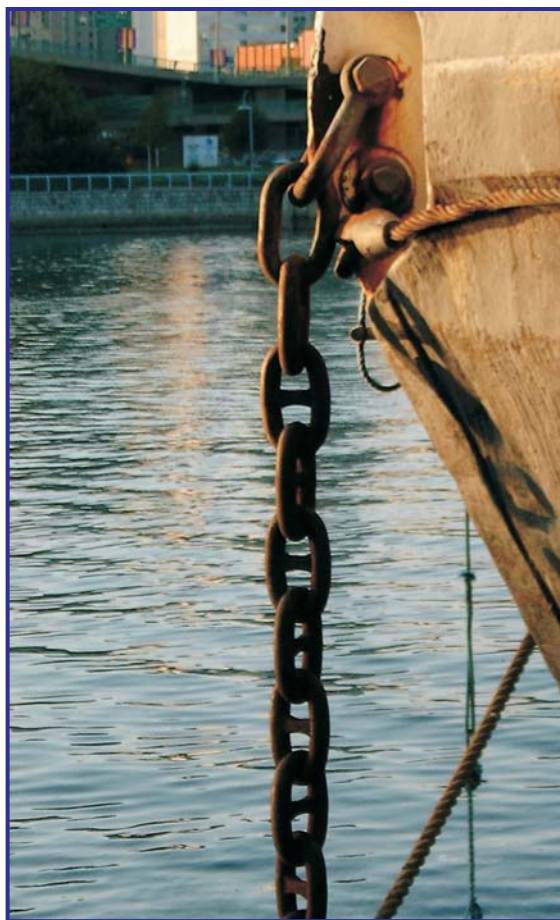




INDUSTRIES LTD.

www.wescovan.com

MARINE INDUSTRY CHAIN & FITTINGS



Head Office: Unit 1, 9663-199A Street Langley BC V1M 2X7

Phone: 604 881 3000 Fax: 604 881 3010

Email: info@wescovan.com

Rigging Centre: 2437 Beta Avenue Burnaby BC V5C 5N1

Phone: 604 292 1220 Fax: 604 292 1222

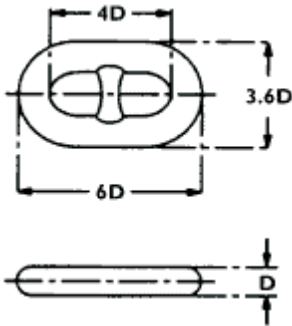
Email: burnaby@wescovan.com

ANCHOR CHAIN

Stud link anchor chain dimensions are standardized to conform with charts published by various classification societies (Lloyds, ABS, DNV etc.) within tolerances. To determine chain link size the following is applicable:

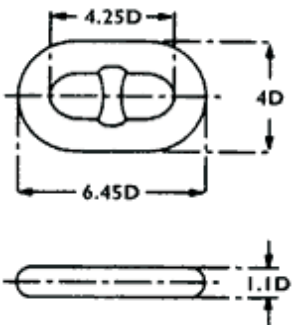


Common Link



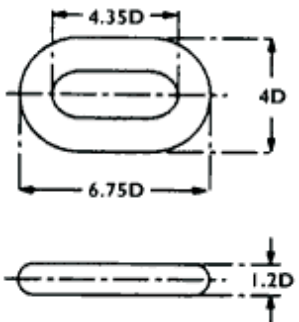
- 6 x Chain Diameter (D) = Length
- 3.6 x Chain Diameter (D) = Width
- 4 x Chain Diameter (D) = Inside Length
- 1 x Chain Diameter (D) = Diameter

Enlarged Link

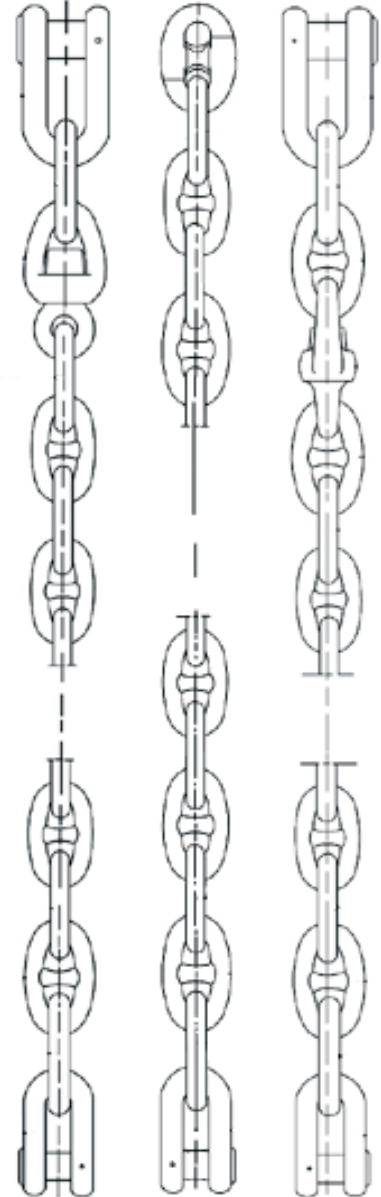


- 6.45 x Chain Diameter (D) = Length
- 4 x Chain Diameter (D) = Width
- 4.25 X Chain Diameter (D) = Inside Length
- 1.1 x Chain Diameter (D) = Diameter

End Link



- 6.75 x Chain Diameter (D) = Length
- 4 x Chain Diameter (D) = Width
- 4.35 X Chain Diameter (D) = Inside Length
- 1.2 x Chain Diameter (D) = Diameter



ABS Proof & Breaking Loads



Chain Diameter		Grade 2		Grade 3		Oil Rig Quality		Weight per 15 Fathom Shot (Appx) Pounds
Inches	mm	Proof Load Pounds	Break Load Pounds	Proof Load Pounds	Break Load Pounds	Proof Load Pounds	Break Load Pounds	
5/8	16	23,745	33,220	33,220	47,465	~	~	365
3/4	19	34,000	47,600	47,600	68,000	~	~	480
7/8	22	46,000	64,400	64,400	91,800	~	~	660
1	25	59,700	83,600	83,600	119,500	84,000	129,000	860
1 1/8	29	75,000	105,000	105,000	150,000	106,000	161,000	1,080
1 1/4	32	92,200	129,000	129,000	184,000	130,000	198,000	1,350
1 5/16	33	101,500	142,000	142,000	203,000	~	~	1,490
1 3/8	34	111,000	155,000	155,000	222,000	157,000	235,000	1,630
1 1/2	38	131,000	183,500	183,500	262,000	185,000	280,000	1,940
1 5/8	42	153,000	214,000	214,000	306,000	216,000	325,000	2,240
1 3/4	44	176,000	247,000	247,000	352,000	249,000	380,000	2,590
1 7/8	48	201,000	281,000	281,000	402,000	285,000	432,000	2,980
2	51	227,000	318,000	318,000	454,000	322,000	488,000	3,360
2 1/8	54	255,000	357,000	357,000	510,000	362,000	548,000	3,790
2 1/4	58	284,000	396,000	396,000	570,000	403,000	610,000	4,250
2 3/8	60	314,000	440,000	440,000	628,000	447,000	675,000	4,730
2 1/2	64	346,000	484,000	484,000	692,000	492,000	744,000	5,270
2 5/8	67	379,000	530,000	530,000	758,000	540,000	813,000	5,820
2 3/4	70	413,000	578,000	578,000	826,000	590,000	885,000	6,410
2 7/8	73	449,000	628,000	628,000	897,000	640,000	965,000	7,020
3	76	485,000	679,000	679,000	970,000	693,000	1,045,000	7,650
3 1/8	79	523,000	732,000	732,000	1,046,000	748,000	1,128,000	8,320
3 1/4	83	562,000	787,000	787,000	1,124,000	804,100	1,210,000	9,010
3 3/8	86	602,000	843,000	843,000	1,204,000	862,200	1,296,000	9,730
3 1/2	90	643,000	900,000	900,000	1,285,000	922,000	1,383,100	10,500
3 5/8	92	685,000	958,000	958,000	1,369,000	1,021,000	1,566,000	11,300
3 3/4	95	728,000	1,019,000	1,019,000	1,455,000	1,120,000	1,750,000	12,000
3 7/8	98	772,000	1,080,000	1,080,000	1,543,000	1,205,000	1,863,000	12,900
4	102	816,000	1,143,000	1,143,000	1,632,000	1,298,000	1,996,500	13,700

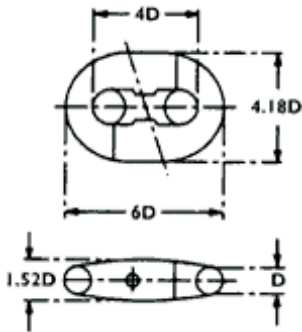
- Other sizes available upon request.

JOINING LINKS

Joining links are used to connect shots of chain together, chain to shackles, chain to anchors or chain to mooring lines. There are several different styles available and most are detachable and assembled onsite.



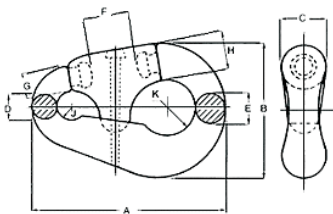
Kenter Joining Link



Kenter links consist of two halves which are coupled together, and held together by a stud. The stud is then secured by a taper pin and lead pellet. Used to join chain to chain.



Anchor Joining Link

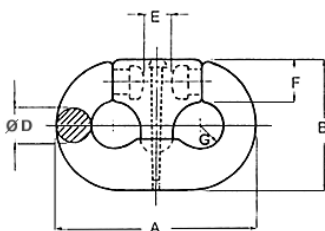


Anchor links consist of three pieces which are coupled together, and then secured by a taper pin and lead pellet. Used to join chain to anchors.

Please check with Wesco Industries for dimensions.



Chain Joining Link



Anchor links consist of three pieces which are coupled together, and secured by a taper pin and lead pellet. Used to join chain to anchor.

Please check with Wesco Industries for dimensions.



SHACKLES

Shackles are versatile joining pieces that can be used for connecting chain to plates, chocks, mooring lines, buoys and other fittings. A wide range is available.



Standard Load Rated Shackles



Safety Anchor Shackle

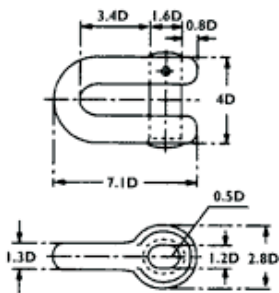
Standard safety shackles are available from 1/2" to 4" in size. They have WLL ranging from 2 Ton through 150 Ton. Generally shackles are Hot Dipped Galvanized and have an ultimate strength of 6 times the Working Load Limit.

Please check with Wesco Industries for dimensions.



Safety Chain Shackle

Joining Shackles

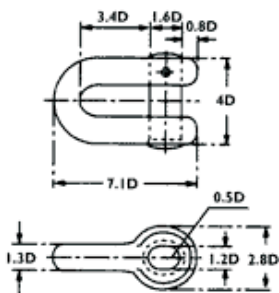


Joining shackles have an oval pin and are available in a wide range of sizes. They are generally supplied in a "black/self colour" finish.

Please check with Wesco Industries for sizes available.



Anchor/End Shackles



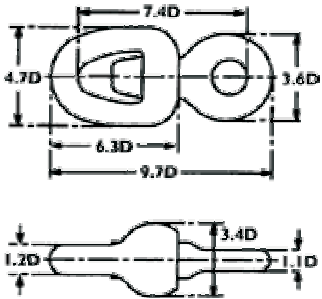
Anchor shackles have an oval pin and are available in a wide range of sizes. They are generally supplied in a "black/self colour" finish.

Please check with Wesco Industries for sizes available.



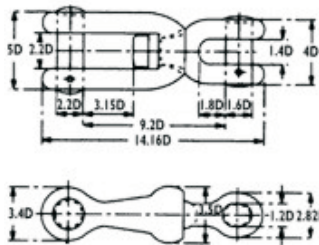
SWIVELS

Swivels are designed to be installed along the length of chain to prevent twisting. They can also be used to join chain to hardware and fittings.



Anchor Chain Swivel

Swivels come complete with a common link at each end. They are designed to be installed along the length of anchor or mooring chain.



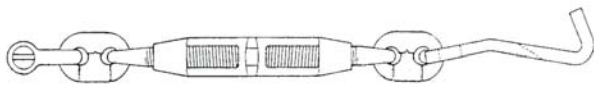
Jaw & Jaw Swivel

Are designed to be installed along the length of anchor chain or wire and connect to an Anchor. One end accepts the Anchor chain or spelter socket while the other end will accept the shank of an Anchor.

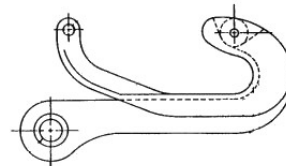


CHAIN STOPPERS

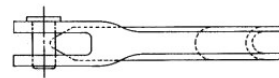
The main function of the chain stoppers is to assist in securing an anchor at the hawse pipe. A range of sizes is available, please contact Wesco Industries for further details.



Devils Claw Chain Stop with Turnbuckle



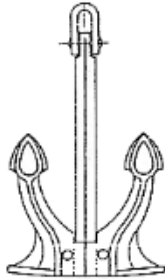
Commercial Pelican Hook



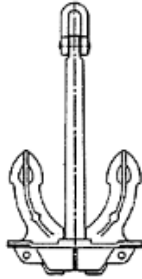
Pelican Hook Chain Stop with Turnbuckle

ANCHORS

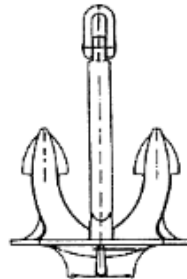
Anchors are available in a wide range of styles and sizes. The design of the anchor is influenced by the composition of the ocean floor: Mud (or silt), Sand, or Rock. For further information on suitable anchors for your application or availability of anchor types please contact Wesco Industries.



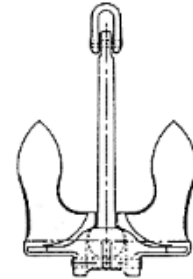
Spek



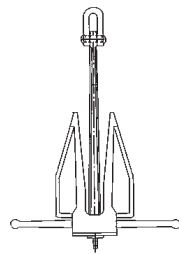
Hall



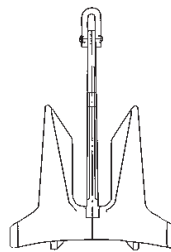
Union



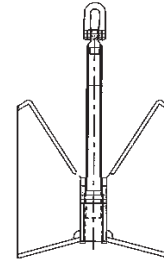
Baldt



Danforth



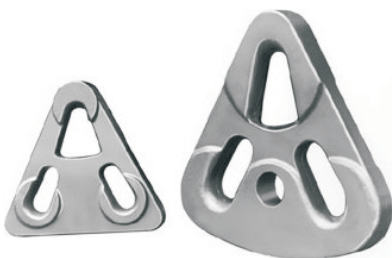
AC 14



Pool

MARQUIP® TOWING PLATES

Marquip Towing plates have a patented design that lets you rig the bridle with only three shackles, eliminating the extra weight, cost, time and risk of the older flounder style plates. The No.2 plate features an extra hole for a tandem shackle to tow additional barges, or to haul in the bridle. They are available in 300,000lbs, 485,000lbs and 624,000lbs pull test capacities. Marquip extra heavy duty shackles to suit are also available.



MOORING CHAIN & FITTINGS

Wesco Industries stock a range of open link Mooring chain for docks, marinas and buoys. Chain is available hot dip galvanized, and some sizes raw (self colour) finish.



Mooring Chain

Chain Size Inches	Finish	Inside Link Dimension Inches	Breaking Strain Pounds	Weight per 100 ft. Pounds
1/2	H.D Galvanized	2.05	24,000	134
5/8	H.D Galvanized	2.52	36,000	230
3/4	H.D Galvanized	4.15	40,000	450
3/4	Self Coloured	4.15	40,000	450
1	H.D Galvanized	4.15	55,000	860



Fittings & Accessories



Load Rated & Non Load Rated Anchor or Chain Shackles.



Galvanized Eyebolts & Eyenuts



Mooring Rope & Cordage Galvanized & Stainless Steel Wire Rope & Fittings

LASHING CHAIN & FITTINGS

Wesco Industries stock a range of deck lashing chain for barges and shipping vessels. Chain is available in long link galvanized alloy steel, Grade 30 Proof Coil, and Grade 70 transport chain.

Wesco stock and manufacture a wide range of fittings and accessories including Shackles, Hooks, Turnbuckles, Loadbinders, Wire Rope and webbing straps.



Deck Lashing Chain Galvanized - 1/2" & 3/4" Diameter



Proof Coil Chain Galvanized & Self Colour - 5/16" to 3/4" Diameter



Grade 70 Transport Chain - 1/4" to 1/2" Diameter



Ratchet & Standard Loadbinders - 1/4" to 1/2" Chain



Galvanized Shackles Rated & Non Rated - 1/4" to 2"



Galvanized & Self Colour Turnbuckles - 1/4" to 2"



Ratchet Straps 1", 2", 3" & 4" Wide



6 x 24 & 6 x 12 Galvanized Wire Rope - 1/4" to 1 1/4" Diameter



Wire Rope Clips & Thimbles - 1/4" to 1 1/4" Diameter



INDUSTRIES LTD.

www.wescovan.com

Head Office: Unit 1, 9663-199A Street
Langley BC V1M 2X7

Phone: 604 881 3000

Fax: 604 881 3010

Email: info@wescovan.com

Rigging Centre: 2437 Beta Avenue
Burnaby BC V5C 5N1

Phone: 604 292 1220

Fax: 604 292 1222

Email: burnaby@wescovan.com

Distributors of:

Wire Rope & Fittings - Powerstrand, Casar, Esco, Crosby,.

Wire Rope all types of constructions and diameters, Wire Rope Fittings, Wire Rope Assemblies, Grips, Hooks, & Links.

Slings - Powerstrand, Gunnebo, Campbell, Procraft.

Wire Rope, Chain, Webbing, Endless Polyester & Rope.

Chain & Fittings - Campbell, Gunnebo - Grabiq, Procraft.

Grade 30, Mooring & Lashing, Grade 70, 80 & 100.

Hoists & Trolleys - Columbus Mckinnon, Coffing & Campbell.

Chain Hoists, Lever Hoists, Cummalongs, Electric Hoists, Air Hoists, Winches, Beam Clamps & Trolleys.

Lifting Equipment- CM, Merrill, Terrier, Johnson, Rud, Crosby.

Shackles, Hooks, Plate Clamps, Crane Blocks, Eyebolts, Turnbuckles.

Cordage - Novatec Braid, Samson, Procraft.

Double Braid, 12 Strand, 8 Strand, 3 Strand & Cords.

Towing & Tie Down - Procraft, CM, Crosby.

Loadbinders, Straps, Chain & Hooks, & Wire Rope Assemblies.

Industries Supplied:

Crane, Construction, Logging, Marine, Industrial, Towing, Entertainment, Elevator, Mining, Offshore Oil & Gas, Fishing, Forestry, Utilities, Steel Works & Rigging.

